



WEST VIEW BOROUGH

"A Good Place to Live"

NEWSLETTER

Spring/Summer 2022

COMMUNITY CLEAN-UP

The community clean-up is scheduled for April 23rd from 9:00 am until noon. This is always a huge success, and we need volunteers. Please contact our Community Clean Up Chairperson Kathy Karnavas at karnavas363@gmail.com or cell 412-370-2207 for more information. If you cannot make it to our event, consider getting together with your neighbors and take a walk in your neighborhood and pick up what you can. Every little bit helps in keeping our town a clean and welcome community.

Dumpsters will be available the weekend of Saturday, April 23 and Sunday, April 24 beside the Borough Building. No electronics or tires are permitted. For those items, contact Waste Management's At Your Door Service at 1-800-449-7587.

DUMPSTER PERMITS

If you are using a dumpster in a residential area within the Borough of West View, you are required to obtain a dumpster permit through our office. Applications can be picked up at the Borough office Monday through Friday, 8:00 am to 4:00 pm. They are also available on our website: www.wvboro.com.

FREE COMPOST

Free compost will be available for your gardens or flower beds. Location will be on Center Avenue at Oakwood Avenue throughout the spring.

MEMORIAL DAY PARADE

Monday, May 30, 2022

Start time: 10:00 am

Start location: Intersection of Perry Highway and Highland Avenue

End location: West View VFW Post 2754 with a memorial service

DOG LICENSES

Your dog needs a license. Applications are available in the borough lobby or online at www.alleghenycounty.us/treasurer/dog.aspx.

LOCAL FOOD BANKS

West View HUB
435 Perry Highway
Tuesday 12:00 pm – 2:00 pm
Thursday 4:00 pm – 6:00 pm

Ridgewood Church
331 Center Avenue
(next to Center Avenue Slice)
Tuesday 5:00 pm – 7:00 pm
Wednesday 2:00 pm – 6:00 pm
Walk-ins welcome.

North Hills Food Bank
845 Perry Highway
Tuesday & Thursday
10:00 am – 1:45 pm

SENIOR CITIZEN PROPERTY TAX RELIEF PROGRAM

Applications for the 2022 West View Borough Senior Citizen Property Tax Relief Program will be available at the beginning of June at the West View Borough Office, 441 Perry Highway, and the Property Tax Office located at 457 Perry Highway.

BELLEVUE MEMORIAL POOL

320 Bellevue Road
Pittsburgh, PA 15229

For information regarding 2022 pool rates and passes, please visit Bellevue Borough's website at www.bellevuepa.org or call 412-766-6164.

EMERGENCY PHONE – AFTER HOURS

The Borough of West View has a phone that can be used for EMERGENCIES AND NON-EMERGENCIES which is located outside of the police station at 441 Perry Highway. It is a red phone mounted on a concrete post. If you come to the station after hours and need assistance, pick up the phone and it will connect directly to Allegheny County 911 Emergency Dispatch. They will contact an officer to meet you at the station. Remember: all you need to do is open the door to the phone and pick up the receiver – contact is immediately made with a 911 dispatcher.

SWIFT911

Stay informed during emergency situations, important events, and more! Download the "SWIFT911 PUBLIC" app and text SWIFT911 to 99538. You can also visit our website www.wvboro.com for more enrollment information.

WEST VIEW BOROUGH

441 Perry Highway
Pittsburgh, PA 15229
(412) 931-2800

www.wvboro.com

Mayor: J.R. Henry

Members of Council

William F. Aguglia - President
Bryan S. Kircher - Vice President
M. Kimberly Steele
Donald Mikec
Robert D. Schellhaas
Scott V. Miller
Eugene Borio

Council meetings are held the second Wednesday of each month at 6:00 pm.

Tax Collector:

Rita Schwarzmeier
(412) 931-1633

POLICE BLOG

Dial 9-1-1 for all emergency AND non-emergency calls for Police, Fire and Ambulance. This is the most efficient and effective way to have your call answered in a timely manner.

When you call 911 during a time of crisis or emergency, please know that the call taker is forwarding the information to the appropriate emergency service agency as you are talking to them. This sends the needed services to you as fast as possible. If there is any doubt whether your concern merits a call, err on the side of caution and call 911.

If you need to reach a specific West View Borough police officer, email addresses and phone exchanges can be found on our website at www.wvboro.com.



Important reminder: If your vehicle is parked outside after dark, lock the doors and remove all valuables. If you see or hear any suspicious activity, call 911 immediately.

WEST VIEW BOROUGH – BANNER COMMUNITY



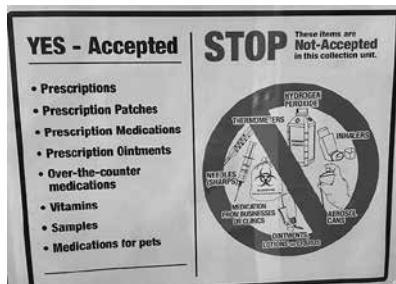
West View Borough was once again designated as a Banner Community for 2022 by the Allegheny League of Municipalities! The Banner Community Program recognizes municipalities that “are committed to professional development, prudent fiscal management, transparency, accountability and proactive communications to engage community stakeholders”. West View recognizes the efforts of all departments in helping us achieve this designation.

LITTLE FREE LIBRARY

Did you know that West View Borough has a Little Free Library? Located on the corner of Perry Highway and Chalfonte Avenue, this tiny red schoolhouse library is a part of a network of “Give a Book, Take a Book” libraries cropping up across the nation. Children and adults are encouraged to visit the Little Free Library located in front of West View Elementary School. Happy reading!



PRESCRIPTION DRUG TAKE BACK BOX PROGRAM



The Borough of West View offers a “Prescription Drug Take Back Box”. The secure large red metal drop off box is located inside the main lobby of the West View Borough building at 441 Perry Highway. Anyone can use the drop off box during normal borough business hours (Monday through Friday 8:00 am to 4:00 pm).

This service is for anyone wanting to dispose of unwanted or unneeded prescription drugs, non-prescription drugs and vitamins. NO LIQUID OR NEEDLES ARE TO BE PLACED IN THE BOX – THIS IS DUE TO OBVIOUS SAFETY CONCERNS FOR THE PEOPLE WHO EMPTY THE BOX. This is a safe alternative to disposing of them yourself or keeping them in your house.

NEW BUSINESSES

Please welcome the following businesses to West View Borough:

Fat Angelo's Pizzeria
461 Perry Highway
412-931-4400

Brass Monkey Trading (Antiques)
431 Perry Highway
412-533-9927

*"guiding families
for six generations
since 1855"*



www.schellhaasfh.com

Funeral Home & Cremation Services

"West View"

Schellhaas Funeral Home
& Cremation Services Inc.

388 Center Ave.

Pittsburgh PA 15229

412-931-5497 / fax 412-931-0498

R.D. Schellhaas Jr., Supervisor

William A. Dice F.D.

Drew Schellhaas F.D.

"Bakerstown—Richland Twp."

Schellhaas Funeral Home & Cremation
Services Ltd.

5864 Heckert Rd.

Bakerstown PA 15007

724-443-1505 / fax 724-443-3437

C. Matthew Schellhaas, Supervisor

"Franklin Park"

Schellhaas & Sons Funeral Home
& Cremation Services Inc.

1600 Stone Mansion Dr.

Sewickley, PA 15143

C. A. Schellhaas, Supervisor

Ryan D. Schellhaas F.D.

(724) 934-3000

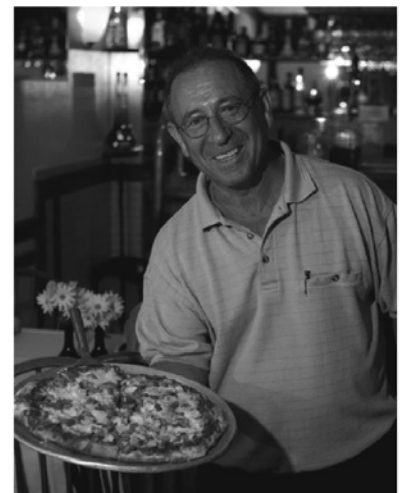


Di Pietro's

Ristorante

*412 Perry Highway
West View
412-931-9878*

**Thank you for supporting
us over the past 43 years.**



2022 STREET SWEEPING

PLEASE CHECK YOUR STREET SIGNS FOR THE CORRECT DAY AND TIME

THE SECOND AND THE FOURTH TUESDAY OF EACH MONTH

2022 DATES - 4/26, 5/10, 5/24, 6/14, 6/28, 7/12, 7/26, 8/9, 8/23, 9/13, 9/27, 10/11, 10/25, 11/8

7:00 AM UNTIL 11:00 AM

ADRIAN AVE. - From Columbia to Dead End Ross Twp. Line**
CARLISLE AVE. - From Princeton to Harvard**
CENTER AVE. - From Perry to Williams (Even # Side)
COLUMBIA AVE. - From Center to Dead End**
COLUMBIA AVE. - From Dead End to Ross Twp. Line**
CORNELL AVE. - From Center to Ross Twp. Line**
HARVARD AVE. - From Center to Carlisle
HOMEKORT AVE. - Entire Length**
LAKEWOOD AVE. - From Chalfonte to Waverly (Odd # Side)
OBERLIN AVE. - Entire Length**
PRINCETON AVE. - From Center to Bronx**
YALE AVE. - From Center to Columbia**
YALE AVE. - From Carlisle to Dead End**

11:00 AM UNTIL 3:00 PM

AMHERST AVE. - From Cornell to Ross Twp. Line**
ANN ARBOR AVE. - Entire Length**
COLUMBIA AVE. - From Center to Highland**
DARTMOUTH AVE. - From Stanford to Lehigh**
FORDHAM AVE. - Entire Length**
GEORGETOWN AVE. - From Cornell to Lehigh**
GEORGETOWN AVE. - From Cornell to Columbia**
GEORGETOWN AVE. - From Columbia to Dead End
HARVARD AVE. - From Center to Kenyon**
LEHIGH AVE. - From Dartmouth to Highland**
PRINCETON AVE. - From Center to Ross Twp. Line**
STANFORD AVE. - From Amherst to Kenyon**
VASSAR AVE. - From Stanford to Kenyon
YALE AVE. - From Stanford to Dead End**

THE SECOND AND FOURTH WEDNESDAY OF EACH MONTH

2022 DATES - 4/27, 5/11, 5/25, 6/8, 6/22, 7/13, 7/27, 8/10, 8/24, 9/14, 9/28, 10/12, 10/26, 11/9

7:00 AM UNTIL 11:00 AM

BRONX AVE. - Entire Length**
CENTER AVE. - From Perry to Williams (Odd # Side)
CHALFONTE AVE. - From Center to Perry**
HEMPSTEAD AVE. - Entire Length****
JAMAICA AVE. - From Hempstead to Highland**
LAKEWOOD AVE. - From Chalfonte to Dead End (Even # Side)
LAKEWOOD AVE. - From Chalfonte to Highland**
MINEOLA AVE. - Entire Length**
MONTCLAIR AVE. - From Lakewood to Highland**
WAVERLY AVE. - Entire Length

11:00 AM UNTIL 3:00 PM

ASHFORD (Left Side/Odd # Side only)
CHALFONTE AVE. - From Bellevue to Ashford (Odd # Side)

CROSS CREEK CT. - Entire Length
HIDDEN VALLEY DR. - Entire Length
JAMAICA AVE. - From Highland to Wellington
MARQUETTE RD. - Entire Length
MONTCLAIR AVE. - From Highland to Dead End
SOUTH FORK DR. - Entire Length
WELLINGTON DR. - Entire Length
WENTWORTH AVE. - Entire Length (Odd # Side)

Please note: VEHICLES MUST BE MOVED DURING THE DESIGNATED TIMES REGARDLESS IF THE STREET SWEEPER HAS PASSED THROUGH, MAKING SURE EMERGENCY VEHICLES HAVE ACCESS...

THE SECOND AND FOURTH THURSDAY OF EACH MONTH

2022 DATES - 4/28, 5/12, 5/26, 6/9, 6/23, 7/14, 7/28, 8/11, 8/25, 9/8, 9/22, 10/13, 10/27, 11/10

7:00 AM UNTIL 11:00 AM

ASHFORD AVE. - (Right Side/Even # Side only)**
BELLEVUE AVE. - Entire Length**
CENTER AVE. - From Perry to Twp. Rd.
CHALFONTE AVE. - From Perry to Bellevue
CHALFONTE AVE. - From Bellevue to Ashford (Even # Side)
CRESSON AVE. - Entire Length
GLENMORE AVE. - Entire Length
HIGHLAND AVE. - From Perry to Ashford**
SCHWITTER AVE. - Entire Length
TOWNSHIP RD. - Entire Length
WENTWORTH AVE. - Entire Length (Even # Side)
WESTFIELD AVE. - Entire Length**

11:00 AM UNTIL 3:00 PM

BRIGHTWOOD AVE. - Entire Length**
CENTER AVE. - From Twp. Rd. to Brightwood
CLAIRMONT AVE. - Entire Length**
CURTIS WAY - Entire Length
FRANKFORT AVE. - From Center to Richland (Even # Side)
HAWTHORNE AVE. - From State to Dead End**
HAWTHORNE AVE. - From Center to State
LANSING AVE. - Entire Length
MT. VERNON - From Norwich to Bell Dr ** (Even # Side)
NORWICH AVE. - From Center to Clairmont**
PARK AVE. - From Center to Frankfort (Even # Side)
PARK AVE - From Perry to Center ** (Odd # Side)
RIDGEWOOD AVE. - From Perry to Dead End (Even # Side)
STATE WAY - Entire Length

THE SECOND AND FOURTH FRIDAY OF EACH MONTH

2022 DATES - 4/22, 5/13, 5/27, 6/10, 6/24, 7/8, 7/22, 8/12, 8/26, 9/9, 9/23, 10/14, 10/28, 11/11

7:00 AM UNTIL 11:00 AM

BELL DRIVE - Entire Length **
CENTER AVE. - From Brightwood to Old Perrysville Rd.
FAIRVIEW AVE. - Entire Length**
MAGNOLIA AVE. - Entire Length**
MARTSOLF AVE. - From Ridgewood to
NORTH PARK RD. (LINWOOD) - Entire Length**
ORLANDO AVE. - Entire Length**

OAKWOOD AVE. - From Bell to Dead End (Steps)**
OAKWOOD AVE. - From Center to Dead End (Steps)**
PARK AVE. - From Perry to Center** (Even # side)
PERRYSVILLE RD. (Old) - From Center to Perry (Boro Side Only)
RICHLAND AVE. - Entire Length**
RIDGEWOOD AVE. - From Perry to Dead End (Odd # Side)

11:00 AM UNTIL 3:00 PM

BEECHMONT AVE. - Entire Length**
FENTON WAY - Entire Length
FRANKFORT AVE. - From Center to Richland (Odd # Side)
FRANKFORT AVE. - From Center to Park**
LIPP AVE. - Entire Length
MARTSOLF AVE. - From Bridge to Park**
MT. VERNON AVE. - From Ridgewood to Bell Dr (Odd Side)**
OAKLEY AVE. - Entire Length**
OAKWOOD AVE. - From Center to Fenton**
PARK AVE. - From Center to Frankfort (Odd # Side)
TOMOKA AVE. - Entire Length**

**** DENOTES - OPPOSITE SIDE STREET PARKING PERMITTED DURING STREET CLEANING HOURS****

****** DENOTES - OPPOSITE SIDE STREET PARKING PERMITTED - HOWEVER DIAGONAL PARKING IS NOT PERMITTED******

WASTE MANAGEMENT



At Your Door
Special Collection™

Waste Management's At Your Door Special Collection service can safely collect many types of unwanted potentially hazardous and hard-to-recycle items from your home.

In 2013, Pennsylvania passed the Covered Device Recycling Act that prohibits the collection of electronic devices such as televisions, computers, laptops, monitors and tablets with regular garbage service. The intent was to keep this e-waste from ending up in landfills.

Please visit www.wmatyourdoor.com or call 1-800-449-7587 for more information on how the program works or to schedule a pickup.

ALLEGHENY COUNTY

Allegheny County residents and visitors can now use a single phone number 412-350-INFO (4636) to request snow and ice removal from county roads and bridges, ask questions related to parks programming and shelter reservations, plus a variety of other topics. Call center staff are available weekdays from 8:30 AM to 6:00 PM. Evening and weekend calls for parks and public works that require immediate attention are directed to on-call staff those departments. Other non-emergency calls will be responded to on the following business day.



Residents can also visit <https://CallCenter.AlleghenyCounty.us> to use the online support center. Users have an option of creating an account to manage their requests but can also submit anonymous service requests. The Allegheny County app is a mobile version of the support center.

NORTH HILLS SCHOOL DISTRICT - SENIOR CITIZEN DISCOUNTS

A Senior Citizen Athletic Pass that entitles North Hills School District residents over age 60 FREE admission to all North Hills home athletic events is available by visiting the high school athletics and activities office.

North Hills School District also offers free admission for senior citizens to the matinees of the fall play and spring musical.

For more information, visit www.nhsd.net.

PET SAFETY IN THE HEAT

Shade and water: Protect your pets from the sun's rays and keep them hydrated.

No cars: Never leave a pet in the car, not even with the window cracked.

No asphalt: If it's too hot for bare feet, it's too hot for bare paws.

Limit exercise: Don't let playful pets over exert themselves in the heat.

Heat stroke: Excessive panting, discolored gums, and mobility problems are signs. Seek veterinary attention immediately.

Cranberry Hearing & Balance

Jenna A. Littleton, AuD, CCC-A
Doctor of Audiology

999 West View Park Drive
Pittsburgh, PA 15229

Phone: 412.931.9290
Fax: 724.304.0155

Visit us at:
www.cranberryhearing.com



HONORING OUR MILITARY BANNERS

Would you like to honor a current or deceased resident of West View Borough who served in the military?

Visit www.wvboro.com and click on "Salute to Our Veterans" for more information and to apply.

West View Floral Shoppe inc.

452 Perry Highway • West View, PA 15229 • (412) 931-1258
Beth Schellhaas - Owner

- Weddings
- Funerals
- Antiques
- Plants
- Gifts



westviewfloral.com
e-mail: westview.floral@verizon.net



West View Barber Shop

(Across from Dollar General)
440 Perry Highway
West View PA 15229
412-931-3090

Open 9-7 Tuesday – Friday
Saturdays 9-3 pm

Book Appointment On-Line at:
visibook.com/westviewbarbershop

BURNING PERMITS

Burning permits are NOT required in West View Borough. Like most neighboring municipalities, West View Borough follows the Allegheny County Health Department's Air Quality Program, as outlined below.

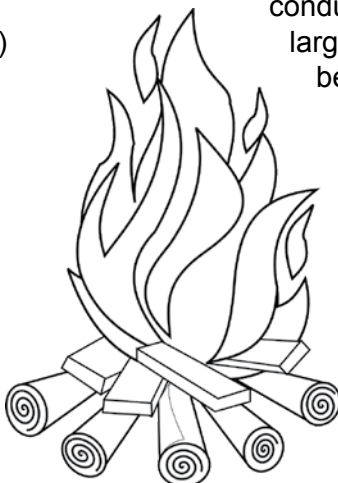
ANYONE FOUND TO BE IN VIOLATION OF THESE GUIDELINES WILL BE SUBJECT TO FINES AND/OR PENALTIES. ALLEGHENY COUNTY HEALTH DEPARTMENT AIR QUALITY PROGRAM GUIDELINES FOR ISSUANCE OF OPEN BURNING PERMITS AND ENFORCEMENT OF THE OPEN BURNING REGULATION - §2105.50 OF ARTICLE XXI (Revised: January 1, 2015)

1. OPEN BURNING SHALL BE DEEMED TO BE ALLOWED WITHOUT A PERMIT ONLY IF:

a. For recreation, camping, or a cookout: i. Only dry, clean wood products or other clean-burning fuels are burned; ii. Only smokeless fuels, if any, are used to start the fire; iii. The

pile of material being burned is no larger than 3' wide, 3' feet long, and 2' high; iv. The fire is at least 15' from the nearest structure, inhabited area, roadway, property line, or utility; and v. No fires are permitted to be burned on Air Quality Action Days. To determine if a day is under this restriction, please visit the Health Department's website at: www.achd.net/air or call 412-578-8115. You can also call the helpline at 412-687-2243.

b. For Warmth of work crews: i. The burning is conducted in a noncombustible container no larger than a 55 gallon drum; ii. The material being burned is completely contained by the container; iii. Only one container is used for each work crew; and iv. The outside temperature is less than forty degrees Fahrenheit (40 F).



TO REPORT SOMEONE WHO IS IN VIOLATION OF THE ABOVE RULES, CONTACT THE POLICE DEPARTMENT AT "9-1-1".

PORT AUTHORITY CONNECTCARD

ConnectCard is a reusable plastic smart card that makes paying your fares faster, easier and more secure than paying with cash.

Using a ConnectCard instead of cash saves 25 cents on every ride and more if you transfer.

You can purchase and reload ConnectCards online, at select Port Authority light rail and busway stations, Port Authority's Downtown Service Center and at participating retail outlets, including most Giant Eagle and Goodwill locations throughout the region.

Balance Protection is available in case your card is ever lost or stolen.

Port Authority Contact Information

Customer Service: 412-442-2000

Weekdays 6AM – 7PM

Weekends and Holidays 8AM – 4:30PM



STREETSCAPE UPDATE

West View Borough has received \$100,000.00 in Community Infrastructure @ Tourism Funding Allegheny County for our Streetscape project along the Perry Highway and Perry at Center corridor. As you may have noticed, there have been 20 new decorative streetlights and new curbs installed in this area. The next phase is to replace the remaining decorative lights along Perry Highway and the 600 block of Center Avenue. We will continue to seek and apply for more funding in order to complete this project with the final phases being new sidewalks, trees, benches and trash cans in this area.

DID YOU KNOW YOU CAN REPORT A POTHOLE ONLINE?

To report a pothole in the borough, simply go to our website www.wvboro.com and click the link under the Quick Links Tab. You can report streetlights that are out as well.

ILLEGIBLE, PEELING, OR BLISTERING VEHICLE REGISTRATION (LICENSE) PLATE

Please follow these instructions to have a new registration plate issued free of charge from the Department of Motor Vehicles.

Download form MV-44 from www.dmv.pa.gov and bring the completed form along with the vehicle that displays the illegible registration to West View Borough Police Department for an officer to verify and complete section 5 of the form. You will then be responsible in sending the form MV-44 to the DMV for your new registration plate.

It is unlawful to display on a vehicle a registration plate that is obscured or otherwise illegible. If the registration plate cannot be recognized from a distance, or if the registration plate shows any blistering, peeling, discoloration or loss of reflectivity, the vehicle owner should visit any official Pennsylvania inspection station for verification that their registration plate is illegible and receive Form MV-46, "Authorization to Replace Registration Plate," from the station OR have a law enforcement official verify the need for a replacement registration plate on Form MV-44, "Application for Duplicate Registration Card, Replacement of Registration Plate, or Weight Class Sticker," obtained from PennDOT's Driver and Vehicle Services website.

RESOURCE GUIDE FOR ALL SENIORS IN WEST VIEW AND ALLEGHENY COUNTY

There is an extremely informative guide available to you for free. There are many topics covered in this publication. Anything from Healthy Care to Safety, Legal, Taxes, Caregiving to Dancing. Take a moment and check this guide out. You may pick up a free copy at the Borough Building or can you download the guide at pittsburghseniornews.com

MARTORELLI STADIUM TRACK

Remember the track is available at Martorelli Stadium when there are no school activities taking place. Please follow the guidelines for the use of the track that are posted at the stadium.

CONGRATULATIONS!

Congratulations to Sister Evelyn who is the Coordinator of the Education & Community Center of Our Lady of Mount Carmel Community Center located at 2 Wentworth Avenue as it has REOPENED. Visit their website at www.mountcarmelpgh.org/community-center-1 or call Sister Evelyn Dettling at 412-585-5575 for more information.

VOLUNTEERS NEEDED

Volunteers are needed to maintain the Beechmont steps/Ridgewood/Center Avenue flower garden this spring. Contact Lynn Webster at 412-760-5914 or email pghseniornews@icloud.com

THANK YOU!

We thank A and N Landscaping for their donation of flowers and time throughout the Borough to help brighten the Borough with flowers and mulch (412) 931-9230

WEST VIEW HISTORICAL SOCIETY

Did you know West View Historical Society has secured a location within the heart of the former West View Park? We are now looking for DONATIONS of all types including monetary gifts to keep the memories alive. Check out the West View Historical Society Facebook page for more information. Donations can be sent to the Borough Hall.

CONTACT YOUR ELECTED OFFICIALS

State Senator
LINDSEY M. WILLIAMS
38th Senatorial District

District Office:
5000 McKnight Road
Suite 405
Pittsburgh, PA 15237
Phone: 412-364-0469

Harrisburg Office:
366 Capitol Building
Senate Box 203038
Harrisburg, PA 17120-3038
Phone: 717-787-6538

STATE REPRESENTATIVE
EMILY KINKEAD
20TH LEGISLATIVE DISTRICT

District Office:
433 E. Ohio St.
Pittsburgh, PA 15212
(412) 321-5523
Fax: (412) 761-2303

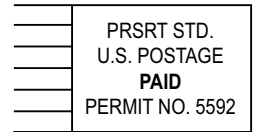
Capitol Office:
106B East Wing
P.O. Box 202020
Harrisburg, PA 17120-2020
(717) 787-5470

RepKinkead@pahouse.net
www.RepEmilyKinkead.com
 @RepKinkead



WEST VIEW BOROUGH

441 Perry Highway
Pittsburgh, PA 15229



Spring/Summer 2022 Newsletter