



WEST VIEW BOROUGH

"A Good Place to Live"

NEWSLETTER

Spring/Summer 2021

COMMUNITY CLEAN-UP

West View Clean-Up will be held April 24th from 9:00 am to 12:00 pm. We will gather on Center Avenue behind the VFW. Dumpsters will not be available this year.

DUMPSTER PERMITS

If you are using a dumpster in a residential area within the Borough of West View, you are required to obtain a dumpster permit through our office. Applications can be picked up at the Borough office Monday through Friday, 8:00 am to 4:00 pm. They are also available on our website: www.wvboro.com.

DOG LICENSES

Your dog needs a license. Applications are available in the borough lobby or online at www.alleghenycounty.us/treasurer/dog.aspx.



PRIMARY ELECTION DAY IS TUESDAY, MAY 18 – EVERY VOTE COUNTS!

WHERE DO I VOTE?

To find your polling location, you can contact the Municipal Building at 412-931-2800. You can also go to the Allegheny County Election Division website: <https://www.pavoterservices.pa.gov/pages/pollingplaceinfo.aspx>.

LOCAL FOOD BANKS

West View HUB
433 Perry Highway
Tuesday 12:00 pm – 2:00 pm
Thursday 4:00 pm – 6:00 pm

Ridgewood Church
331 Center Avenue
(next to Center Avenue Slice)
Tuesday 5:00 pm – 7:00 pm
Wednesday 2:00 pm – 6:00 pm
Walk-ins welcome.

North Hills Food Bank
845 Perry Highway
Tuesday & Thursday
10:00 am – 1:45 pm

SENIOR CITIZEN PROPERTY TAX RELIEF PROGRAM

Applications for the 2021 West View Borough Senior Citizen Property Tax Relief Program will be available at the beginning of June at the West View Borough Office, 441 Perry Highway, and the Property Tax Office located at 457 Perry Highway.

THE BOROUGH BUSINESS OFFICE WILL BE CLOSED:

- Tuesday, May 18 for Primary Election Day
- Monday, May 31 for Memorial Day
- Monday, July 5 for Independence Day

EMERGENCY PHONE – AFTER HOURS

The Borough of West View has a phone that can be used for EMERGENCIES AND NON-EMERGENCIES which is located outside of the police station at 441 Perry Highway. It is a red phone mounted on a concrete post. If you come to the station after hours and need assistance, pick up the phone and it will connect directly to Allegheny County 911 Emergency Dispatch. They will contact an officer to meet you at the station. Remember: all you need to do is open the door to the phone and pick up the receiver – contact is immediately made with a 911 dispatcher.

WEST VIEW BOROUGH

441 Perry Highway
Pittsburgh, PA 15229
(412) 931-2800

www.wvboro.com

Mayor: J.R. Henry

Members of Council

M. Kimberly Steele - President
Bryan S. Kircher - Vice President
William F. Aguglia
Donald Mikec
Robert D. Schellhaas
Scott V. Miller
Eugene Borio

Council meetings are held the second Thursday of each month at 6:00 pm in Council Chambers.

Real Estate Tax Collector:

Rita Schwarzmeier
(412) 931-1633

POLICE BLOG

Dial 9-1-1 for all emergency AND non-emergency calls for Police, Fire and Ambulance. This is the most efficient and effective way to have your call answered in a timely manner.

When you call 911 during a time of crisis or emergency, please know that the call taker is forwarding the information to the appropriate emergency service agency as you are talking to them. This sends the needed services to you as fast as possible. If there is any doubt whether your concern merits a call, err on the side of caution and call 911.

If you need to reach a specific West View Borough police officer, email addresses and phone exchanges can be found on our website at www.wvboro.com.

Important reminder: If your vehicle is parked outside after dark, lock the doors and remove all valuables. If you see or hear any suspicious activity, call 911 immediately.



WEST VIEW BOROUGH – BANNER COMMUNITY



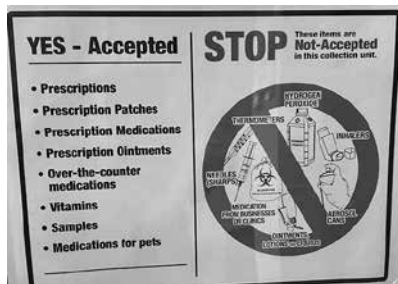
West View Borough was once again designated as a Banner Community for 2021 by the Allegheny League of Municipalities! The Banner Community Program recognizes municipalities that “are committed to professional development, prudent fiscal management, transparency, accountability and proactive communications to engage community stakeholders”. West View recognizes the efforts of all departments in helping us achieve this designation.

LITTLE FREE LIBRARY

Did you know that West View Borough has a Little Free Library? Located on the corner of Perry Highway and Chalfonte Avenue, this tiny red schoolhouse library is a part of a network of “Give a Book, Take a Book” libraries cropping up across the nation. Children and adults are encouraged to visit the Little Free Library located in front of West View Elementary School. Happy reading!



PRESCRIPTION DRUG TAKE BACK BOX PROGRAM



The Borough of West View offers a “Prescription Drug Take Back Box”. The secure large red metal drop off box is located inside the main lobby of the West View Borough building at 441 Perry Highway. Anyone can use the drop off box during normal borough business hours (Monday through Friday 8:00 am to 4:00 pm).

This service is for anyone wanting to dispose of unwanted or unneeded prescription drugs, non-prescription drugs and vitamins. NO LIQUID OR NEEDLES ARE TO BE PLACED IN THE BOX – THIS IS DUE TO OBVIOUS SAFETY CONCERNS FOR THE PEOPLE WHO EMPTY THE BOX. This is a safe alternative to disposing of them yourself or keeping them in your house.

NEW BUSINESSES

Please welcome the following businesses to West View Borough:

Art Imagined (432 Perry Highway)

Bulldawgs (5339 Perry Highway)

Elite Media Installations (367 Perry Highway)

Severina (1330 Center Avenue)

Tiny Box Vape Shop (moved to 442 Perry Highway)

Sweet Peas # 26 (formerly West View Shell, 411 Perry Highway)

*"guiding families
for six generations
since 1855"*



www.schellhaasfh.com

Funeral Home & Cremation Services

"West View"

Schellhaas Funeral Home
& Cremation Services Inc.

388 Center Ave.

Pittsburgh PA 15229

412-931-5497 / fax 412-931-0498

R.D. Schellhaas Jr., Supervisor

William A. Dice F.D.

Drew Schellhaas F.D.

"Bakerstown—Richland Twp."

Schellhaas Funeral Home & Cremation
Services Ltd.

5864 Heckert Rd.

Bakerstown PA 15007

724-443-1505 / fax 724-443-3437

C. Matthew Schellhaas, Supervisor

"Franklin Park"

Schellhaas & Sons Funeral Home
& Cremation Services Inc.

1600 Stone Mansion Dr.

Sewickley, PA 15143

C. A. Schellhaas, Supervisor

Ryan D. Schellhaas F.D.

(724) 934-3000

Di Pietro's Ristorante

*Best Homemade Italian Food and Pizza
in the Burg! For the past 41 Years.*

**Let Us Prepare A
Homemade Meal
For YOU Today!**

If we won't eat it, we won't serve it!

***We Cook For You Like
You're Our Family***

Pietro & Rina thank you for supporting us for the past 41 Years!

Call TODAY! 412-931-9878

412 Perry Highway, West View

Hours: Monday - Saturday 11:00 am - 8:00 pm • Sunday 12 Noon - 8:00 pm

2021 Street Sweeping - A Message from the Borough

We know a lot of you are still working from home, but from April 22nd through November 12th, you will once again need to pay attention to the street sweeping signs if you park your car on the streets in West View. The times and days of the week for street sweeping is posted on each street in the borough. Vehicles are to be moved during those times, even if the street sweeper has passed through. Fines for street sweeping are \$10.00 and if not paid, a state citation will be issued.

We want to thank you in advance for keeping the lanes clear so the street sweeper can clean the streets. Your cooperation is what makes the program successful. Street sweeping schedules are available in our lobby at 441 Perry Highway and on our website at www.wvboro.com.

PLEASE CHECK YOUR STREET SIGNS FOR THE CORRECT DAY AND TIME

THE SECOND AND THE FOURTH TUESDAY OF EACH MONTH

2021 DATES - 4/27, 5/11, 5/25, 6/8, 6/22, 7/13, 7/27, 8/10, 8/24, 9/14, 9/28, 10/12, 10/26 & 11/9

7:00 AM UNTIL 11:00 AM

ADRIAN AVE. - From Columbia to Dead End Ross Twp. Line**
CARLISLE AVE. - From Princeton to Harvard**
CENTER AVE. - From Perry to Williams (Even # Side)
COLUMBIA AVE. - From Center to Dead End**
COLUMBIA AVE. - From Dead End to Ross Twp. Line**
CORNELL AVE. - From Center to Ross Twp. Line**
HARVARD AVE. - From Center to Carlisle
HOMEKORT AVE. - Entire Length**
LAKEWOOD AVE. - From Chalfonte to Waverly (Odd # Side)
OBERLIN AVE. - Entire Length**
PRINCETON AVE. - From Center to Bronx**
YALE AVE. - From Center to Columbia**
YALE AVE. - From Carlisle to Dead End**

11:00 AM UNTIL 3:00 PM

AMHERST AVE. - From Cornell to Ross Twp. Line**
ANN ARBOR AVE. - Entire Length**
COLUMBIA AVE. - From Center to Highland**
DARTMOUTH AVE. - From Stanford to Lehigh**
FORDHAM AVE. - Entire Length**
GEORGETOWN AVE. - From Cornell to Lehigh**
GEORGETOWN AVE. - From Cornell to Columbia**
GEORGETOWN AVE. - From Columbia to Dead End
HARVARD AVE. - From Center to Kenyon**
LEHIGH AVE. - From Dartmouth to Highland**
PRINCETON AVE. - From Center to Ross Twp. Line**
STANFORD AVE. - From Amherst to Kenyon**
VASSAR AVE. - From Stanford to Kenyon
YALE AVE. - From Stanford to Dead End**

THE SECOND AND FOURTH WEDNESDAY OF EACH MONTH

2021 DATES - 4/28, 5/12, 5/26, 6/9, 6/23, 7/14, 7/28, 8/11, 8/25, 9/8, 9/22, 10/13, 10/27, & 11/10

7:00 AM UNTIL 11:00 AM

BRONX AVE. - Entire Length**
CENTER AVE. - From Perry to Williams (Odd # Side)
CHALFONTE AVE. - From Center to Perry**
HEMPSTEAD AVE. - Entire Length****
JAMAICA AVE. - From Hempstead to Highland**
LAKEWOOD AVE. - From Chalfonte to Dead End (Even # Side)
LAKEWOOD AVE. - From Chalfonte to Highland**
MINEOLA AVE. - Entire Length**
MONTCLAIR AVE. - From Lakewood to Highland**
WAVERLY AVE. - Entire Length

11:00 AM UNTIL 3:00 PM

ASHFORD (Left Side/Odd # Side only)
CHALFONTE AVE. - From Bellevue to Ashford
(Odd # Side)
CROSS CREEK CT. - Entire Length
HIDDEN VALLEY DR. - Entire Length
JAMAICA AVE. - From Highland to Wellington
MARQUETTE RD. - Entire Length
MONTCLAIR AVE. - From Highland to Dead End
SOUTH FORK DR. - Entire Length
WELLINGTON DR. - Entire Length
WENTWORTH AVE. - Entire Length (Odd # Side)

THE SECOND AND FOURTH THURSDAY OF EACH MONTH

2021 DATES - 4/22, 5/13, 5/27, 6/10, 6/24, 7/8, 7/22, 8/12, 8/26, 9/9, 9/23, 10/14, 10/28, & 11/11

7:00 AM UNTIL 11:00 AM

ASHFORD AVE. - (Right Side/Even # Side only)**
BELLEVUE AVE. - Entire Length**
CENTER AVE. - From Perry to Twp. Rd.
CHALFONTE AVE. - From Perry to Bellevue
CHALFONTE AVE. - From Bellevue to Ashford (Even # Side)
CRESSON AVE. - Entire Length
GLENMORE AVE. - Entire Length
HIGHLAND AVE. - From Perry to Ashford**
SCHWITTER AVE. - Entire Length
TOWNSHIP RD. - Entire Length
WENTWORTH AVE. - Entire Length (Even # Side)
WESTFIELD AVE. - Entire Length**

11:00 AM UNTIL 3:00 PM

BRIGHTWOOD AVE. - Entire Length**
CENTER AVE. - From Twp. Rd. to Brightwood
CLAIRMONT AVE. - Entire Length**
CURTIS WAY - Entire Length
FRANKFORT AVE. - From Center to Richland (Even # Side)
HAWTHORNE AVE. - From State to Dead End**
HAWTHORNE AVE. - From Center to State
LANSING AVE. - Entire Length
MT. VERNON - From Norwich to Bell Dr ** (Even # Side)
NORWICH AVE. - From Center to Clairmont**
PARK AVE. - From Center to Frankfort (Even # Side)
PARK AVE - From Perry to Center ** (Odd # Side)
RIDGEWOOD AVE. - From Perry to Dead End (Even # Side)
STATE WAY - Entire Length

THE SECOND AND FOURTH FRIDAY OF EACH MONTH

2021 DATES - 4/23, 5/14, 5/28, 6/11, 6/25, 7/9, 7/23, 8/13, 8/27, 9/10, 9/24, 10/8, 10/22,& 11/12

7:00 AM UNTIL 11:00 AM

BELL DRIVE - Entire Length **
CENTER AVE. - From Brightwood to Old Perrysville Rd.
FAIRVIEW AVE. - Entire Length**
MAGNOLIA AVE. - Entire Length**
MARTSOLF AVE. - From Ridgewood to
NORTH PARK RD. (LINWOOD) - Entire Length**
ORLANDO AVE. - Entire Length**

OAKWOOD AVE. - From Bell to Dead End (Steps)**
OAKWOOD AVE. - From Center to Dead End (Steps)**
PARK AVE. - From Perry to Center** (Even # side)
PERRYSVILLE RD. (Old) - From Center to Perry (Boro Side Only)
RICHLAND AVE. - Entire Length**
RIDGEWOOD AVE. - From Perry to Dead End (Odd # Side)

11:00 AM UNTIL 3:00 PM

BEECHMONT AVE. - Entire Length**
FENTON WAY - Entire Length
FRANKFORT AVE. - From Center to Richland (Odd # Side)
FRANKFORT AVE. - From Center to Park**
LIPP AVE. - Entire Length
MARTSOLF AVE. - From Bridge to Park**
MT. VERNON AVE. - From Ridgewood to Bell Dr (Odd Side)**
OAKLEY AVE. - Entire Length**
OAKWOOD AVE. - From Center to Fenton**
PARK AVE. - From Center to Frankfort (Odd # Side)
TOMOKA AVE. - Entire Length**

**** DENOTES - OPPOSITE SIDE STREET PARKING PERMITTED DURING STREET CLEANING HOURS****

***** DENOTES - OPPOSITE SIDE STREET PARKING PERMITTED - HOWEVER DIAGONAL PARKING IS NOT PERMITTED*****

WASTE MANAGEMENT

Waste Management's At Your Door Special Collection service can safely collect many types of unwanted potentially hazardous and hard-to-recycle items from your home.

In 2013, Pennsylvania passed the Covered Device Recycling Act that prohibits the collection of electronic devices such as televisions, computers, laptops, monitors and tablets with regular garbage service. The intent was to keep this e-waste from ending up in landfills.

Please visit www.wmatyourdoor.com or call 1-800-449-7587 for more information on how the program works or to schedule a pickup.

FREE GLASS RECYCLING

Waste Management will no longer collect glass in your recyclables.

We have partnered with Ross Township and with the Pennsylvania Resources Council to offer free glass recycling to residents. The collection container is located near the Ross Township Public Works Complex entrance at 225 Cemetery Ln.

Residents are encouraged to follow these guidelines:

- Utilize the container only during daylight hours
- Glass only- bottles, jugs and jars - all colors accepted
- NO plastic bags, paper bags, paper or cardboard
- Clean/rinse your glass before disposal
- Do not leave bags or debris outside of the container

Please take advantage
of this great service!

SECURITY SYSTEMS

ATTENTION HOMEOWNERS WITH SECURITY SYSTEMS

If you have a security alarm system in your home, please make sure to advise your security company of alternate phone numbers where you can be reached, as well as a secondary contact and phone number. In the event the police and/or fire department are called to your home on an alarm call, a secondary contact is very helpful should you not be able to be reached and entrance is needed into your home.

PET SAFETY IN THE HEAT

Shade and water: Protect your pets from the sun's rays and keep them hydrated.

No cars: Never leave a pet in the car, not even with the window cracked.

No asphalt: If it's too hot for bare feet, it's too hot for bare paws.

Limit exercise: Don't let playful pets over exert themselves in the heat.

Heat stroke: Excessive panting, discolored gums, and mobility problems are signs. Seek veterinary attention immediately.



**Erie
Insurance®**

J. S. SMITH INSURANCE AGENCY, INC.
TODD M. SMITH

Auto • Home • Business • Life
156 PERRY HIGHWAY
PITTSBURGH, PA 15229
412-931-6070 • Fax: 412-931-6077
todd@jssmithinsurance.com

**Cranberry
Hearing & Balance**

Jenna A. Littleton, AuD, CCC-A
Doctor of Audiology

999 West View Park Drive
Pittsburgh, PA 15229

Phone: 412.931.9290
Fax: 724.304.0155

Visit us at:
www.cranberryhearing.com



HONORING OUR MILITARY BANNERS

Would you like to honor a current or deceased resident of West View Borough who served in the military?

Visit www.wvboro.com and click on "Salute to Our Veterans" for more information and to apply.

West View Floral Shoppe inc.

452 Perry Highway • West View, PA 15229 • (412) 931-1258
Beth Schellhaas - Owner

- Weddings
- Funerals
- Antiques
- Plants
- Gifts



westviewfloral.com
e-mail: westview.floral@verizon.net



West View Barber Shop

(Across from Dollar General)
440 Perry Highway
West View PA 15229
412-931-3090

Open 9-7 Tuesday – Friday
Saturdays 9-3 pm

Book Appointment On-Line at:
visibook.com/westviewbarbershop

BURNING PERMITS

Burning permits are NOT required in West View Borough. Like most neighboring municipalities, West View Borough follows the Allegheny County Health Department's Air Quality Program, as outlined below.

ANYONE FOUND TO BE IN VIOLATION OF THESE GUIDELINES WILL BE SUBJECT TO FINES AND/OR PENALTIES. ALLEGHENY COUNTY HEALTH DEPARTMENT AIR QUALITY PROGRAM GUIDELINES FOR ISSUANCE OF OPEN BURNING PERMITS AND ENFORCEMENT OF THE OPEN BURNING REGULATION - §2105.50 OF ARTICLE XXI (Revised: January 1, 2015)

1. OPEN BURNING SHALL BE DEEMED TO BE ALLOWED WITHOUT A PERMIT ONLY IF:

a. For recreation, camping, or a cookout: i. Only dry, clean wood products or other clean-burning fuels are burned; ii. Only smokeless fuels, if any, are used to start the fire; iii. The

pile of material being burned is no larger than 3' wide, 3' feet long, and 2' high; iv. The fire is at least 15' from the nearest structure, inhabited area, roadway, property line, or utility; and v. No fires are permitted to be burned on Air Quality Action Days. To determine if a day is under this restriction, please visit the Health Department's website at: www.achd.net/air or call 412-578-8115. You can also call the helpline at 412-687-2243.

b. For Warmth of work crews: i. The burning is conducted in a noncombustible container no larger than a 55 gallon drum; ii. The material being burned is completely contained by the container; iii. Only one container is used for each work crew; and iv. The outside temperature is less than forty degrees Fahrenheit (40 F).



TO REPORT SOMEONE WHO IS IN VIOLATION OF THE ABOVE RULES, CONTACT THE POLICE DEPARTMENT AT "9-1-1".

WHAT YOU CAN DO TO AVOID A SCAM

Block unwanted calls and text messages. Take steps to block unwanted calls and to filter unwanted text messages.

Do not give your personal or financial information in response to a request that you did not expect. Legitimate organizations will not call, email, or text to ask for your personal information, like your Social Security, bank account, or credit card numbers.

If you get an email or text message from a company you do business with and you think it is real, it is still best **not to click on any links**. Instead, contact them using a website you know is trustworthy. Or look up their phone number. Do not call a number they gave you or the number from your caller ID.

Resist the pressure to act immediately. Legitimate businesses will give you time to make a decision. Anyone who pressures you to pay or give them your personal information is a scammer.

Know how scammers tell you to pay. Never pay someone who insists you pay with a gift card or by using a money transfer service. And never deposit a check and send money back to someone.



PREMISE ALERT SYSTEM

What is the Premise Alert System? The Premise Alert System provides families with a uniform method to alert first responders about special needs individuals. It also provides first responders with advance knowledge, allowing for quick and educated responses during crises, evacuations, and disasters.

What is the Premise Alert Request Form? The Emergency Dispatch Centers (911) use these forms to gather information about residents who have special needs. This information is helpful for emergency responders to know when responding to a home.

How do I use the form? Fill out the form with as much information as you would want put into the 911 database, sign it, and then take a copy to your local police department. They will review it and send a copy to the County 911 center. The information will be put into the system for future use. **Premise Alert forms and stickers for vehicles and homes are available at the West View Police Department.**



WEST VIEW PARKS AND PLAYGROUNDS

Barry G. Schell Field: Located on Center Ave. This mixed use facility offers a well maintained infield and outfield for any of your sporting needs. A great place to walk, exercise or just relax in the shade of our mature oak trees.

Richard E. Powell Park: Located in the 500 Block of Perry Highway, offers green space, basketball court, swings, climbing equipment, gazebo with picnic tables to enjoy lunch with family.

Glenmore Park: Located at Glenmore and Ashford Ave's. It offers a basketball court, climbing and sliding equipment. It also has picnic tables and benches to relax while the little ones play.

Columbia Park: Located in the 200 Blk of Columbia Ave, offers a gazebo with picnic tables, benches, slides and a merry-go-round all within a small comfortable area.

Chief John Farley Park: Located in Norval Alley between Martsof and Park Ave's. Thanks to funding that was secured with the help of former State Representative Adam Ravenstahl, it was recently updated to state-of-the-art mixed use equipment for ages 2-12. Swings, climbers and slides are all shaded by a large canopy. The crushed limestone walkway leads you to picnic tables and benches and overlooks our basketball court and park so you can relax while they play.

PROJECT LIFESAVER

WHAT IS PROJECT LIFESAVER?

PROJECT LIFESAVER is a program offered by law enforcement and other emergency responders in 41 states, using proven radio technology and specially trained search and rescue teams, to find citizens enrolled in the program when they become lost.

- Do you have a loved one who wanders away from your residence?
- Have you had to call 911 when a loved one cannot be found?
- Do you know a loved one who often “escapes” from home?

If you answer “yes” to one or more of these questions, you may wish to enroll in Project Lifesaver.

HOW MUCH DOES PROJECT LIFESAVER COST?

Allegheny County District Attorney Stephen Zappala is sponsoring PROJECT LIFESAVER FREE to Allegheny County residents.

HOW DOES PROJECT LIFESAVER WORK?

Persons enrolled in the program wear a small transmitter, about the size of a wristwatch, which emits a unique tracking signal. If a person goes missing, search teams use their signal receiving equipment to track and locate the missing person.

WHO CAN ENROLL?

Any Allegheny County resident who is a caregiver can enroll on behalf of a person* with Alzheimer’s, or other form of dementia, Down’s syndrome, autism spectrum disorder or other disability, as well as veterans suffering from post-traumatic stress disorder who have a tendency to wander, run or escape from their residences.

*Persons residing in group homes or who operate motor vehicles are NOT permitted to be enrolled.

HOW CAN I ENROLL?

If you are a caregiver for someone you think is eligible to enroll in this program, or would like more information about PROJECT LIFESAVER, contact the Allegheny County District Attorney’s Office, Assistant District Attorney Angela Kelley at (412) 350-3138 or email: Akelley@alleghenycountyda.us

CONTACT YOUR ELECTED OFFICIALS

State Senator
**LINDSEY M.
WILLIAMS**
38th Senatorial District

District Office:
5000 McKnight Road
Suite 405
Pittsburgh, PA 15237
Phone: 412-364-0469

Harrisburg Office:
366 Capitol Building
Senate Box 203038
Harrisburg, PA 17120-3038
Phone: 717-787-6538

STATE REPRESENTATIVE
EMILY KINKEAD
20TH LEGISLATIVE DISTRICT

District Office:
433 E. Ohio St.
Pittsburgh, PA 15212
(412) 321-5523
Fax: (412) 761-2303

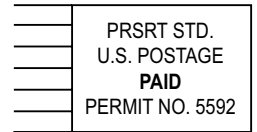
Capitol Office:
106B East Wing
P.O. Box 202020
Harrisburg, PA 17120-2020
(717) 787-5470

RepKinhead@pahouse.net
www.RepEmilyKinhead.com
 @RepKinhead



WEST VIEW BOROUGH

441 Perry Highway
Pittsburgh, PA 15229



Spring/Summer 2021 Newsletter