



# WEST VIEW BOROUGH

*"A Good Place to Live"*

NEWSLETTER

Spring/Summer 2020

## COMMUNITY CLEAN-UP

The community clean-up that was scheduled for April 18 has been cancelled. We are hoping to reschedule at a later date. If small groups would still like to canvas the area, they are welcome to do so.

Dumpsters will be available the weekend of Saturday, May 2 and Sunday, May 3 beside the Borough Building. No electronics or tires are permitted. For those items, contact Waste Management's At Your Door Service at 1-800-449-7587.

## DUMPSTER PERMITS

If you are using a dumpster in a residential area within the Borough of West View, you are required to obtain a dumpster permit through our office. Applications can be picked up at the Borough office Monday through Friday, 8:00 am to 4:00 pm.

## FREE COMPOST

Free compost will be available for your gardens or flower beds at the salt pile on Glenmore Avenue and the area of Center Avenue/Oakwood Avenue.

## DOG LICENSES

Your dog needs a license. Applications are available in the borough lobby or online at [www.alleghenycounty.us/treasurer/dog.aspx](http://www.alleghenycounty.us/treasurer/dog.aspx).

## MEMORIAL DAY PARADE

Monday, May 25, 2020

Start time: 10:00 AM

Start location: Intersection of Perry Highway and Highland Avenue  
End location: West View VFW Post 2754 with a memorial service

## LOCAL FOOD BANKS

West View HUB

435 Perry Highway

Tuesday 12:00 pm – 2:00 pm

Thursday 4:00 pm – 6:00 pm

Ridgewood Church

331 Center Avenue

(next to Center Avenue Slice)

Tuesday 5:00 pm – 7:00 pm

Wednesday 2:00 pm – 6:00 pm

Walk-ins welcome.

North Hills Food Bank

845 Perry Highway

Tuesday & Thursday

10:00 am – 1:45 pm

## SENIOR CITIZEN PROPERTY TAX RELIEF PROGRAM

Applications for the 2020 West View Borough Senior Citizen Property Tax Relief Program will be available at the beginning of June at the West View Borough Office, 441 Perry Highway, and the Property Tax Office located at 457 Perry Highway.

## SWIFT911

Stay informed during emergency situations, important events and more! Download the "SWIFT911 Public" app and text SWIFT911 to 99538. You can also visit our website [www.wvboro.com](http://www.wvboro.com) for more enrollment information.

## BELLEVUE MEMORIAL POOL

320 Bellevue Road

Pittsburgh, PA 15229

For information regarding 2020 pool rates and passes, please visit Bellevue Borough's website at [www.bellevuepa.org](http://www.bellevuepa.org) or call 412-766-6164.

## EMERGENCY PHONE – AFTER HOURS

The Borough of West View has a phone that can be used for EMERGENCIES AND NON-EMERGENCIES which is located outside of the police station at 441 Perry Highway. It is a red phone mounted on a concrete post. If you come to the station after hours and need assistance, pick up the phone and it will connect directly to Allegheny County 911 Emergency Dispatch. They will contact an officer to meet you at the station. Remember: all you need to do is open the door to the phone and pick up the receiver – contact is immediately made with a 911 dispatcher.

## WEST VIEW BOROUGH

441 Perry Highway  
Pittsburgh, PA 15229  
(412) 931-2800

[www.wvboro.com](http://www.wvboro.com)

**Mayor:** J.R. Henry

### Members of Council

M. Kimberly Steele - President  
Bryan S. Kircher - Vice President  
William F. Aguglia  
Donald Mikec  
Robert D. Schellhaas  
Scott V. Miller  
Eugene Borio

Council meetings are held the second Thursday of each month at 7:00 PM

### Tax Collector:

Rita Schwarzmeier  
(412) 931-1633

## POLICE BLOG

Dial 9-1-1 for all emergency AND non-emergency calls for Police, Fire and Ambulance. This is the most efficient and effective way to have your call answered in a timely manner.

When you call 911 during a time of crisis or emergency, please know that the call taker is forwarding the information to the appropriate emergency service agency as you are talking to them. This sends the needed services to you as fast as possible. If there is any doubt whether your concern merits a call, err on the side of caution and call 911.

If you need to reach a specific West View Borough police officer, email addresses and phone exchanges can be found on our website at [www.wvboro.com](http://www.wvboro.com).

Important reminder: If your vehicle is parked outside after dark, lock the doors and remove all valuables. If you see or hear any suspicious activity, call 911 immediately.



## WEST VIEW BOROUGH – BANNER COMMUNITY



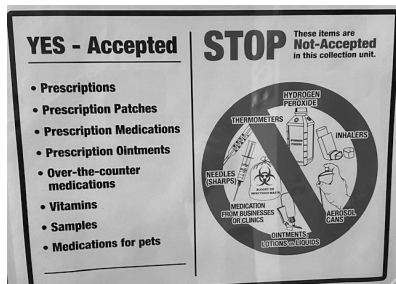
West View Borough was once again designated as a Banner Community for 2020 by the Allegheny League of Municipalities! The Banner Community Program recognizes municipalities that “are committed to professional development, prudent fiscal management, transparency, accountability and proactive communications to engage community stakeholders”. West View recognizes the efforts of all departments in helping us achieve this designation.

## LITTLE FREE LIBRARY

Did you know that West View Borough has a Little Free Library? Located on the corner of Perry Highway and Chalfonte Avenue, this tiny red schoolhouse library is a part of a network of “Give a Book, Take a Book” libraries cropping up across the nation. Children and adults are encouraged to visit the Little Free Library located in front of West View Elementary School. Happy reading!



## PRESCRIPTION DRUG TAKE BACK BOX PROGRAM



The Borough of West View offers a “Prescription Drug Take Back Box”. The secure large red metal drop off box is located inside the main lobby of the West View Borough building at 441 Perry Highway. Anyone can use the drop off box during normal borough business hours (Monday through Friday 8:00 am to 4:00 pm).

This service is for anyone wanting to dispose of unwanted or unneeded prescription drugs, non-prescription drugs and vitamins. NO LIQUID OR NEEDLES ARE TO BE PLACED IN THE BOX – THIS IS DUE TO OBVIOUS SAFETY CONCERNS FOR THE PEOPLE WHO EMPTY THE BOX. This is a safe alternative to disposing of them yourself or keeping them in your house.

## NEW BUSINESSES

**Please welcome the following businesses to West View Borough:**

Blueberry Pharmacy (1018 West View Park Drive)

The Cakery (479 Perry Highway)

Cranberry Hearing and Balance (999 West View Park Drive)

Perryworks (454 Perry Highway)

Pray Focus Grind (652 Center Avenue)

*"guiding families  
for six generations  
since 1855"*



[www.schellhaasfh.com](http://www.schellhaasfh.com)

*Funeral Home & Cremation Services*

*"West View"*

Schellhaas Funeral Home  
& Cremation Services Inc.

388 Center Ave.

Pittsburgh PA 15229

412-931-5497 / fax 412-931-0498

R.D. Schellhaas Jr., Supervisor

William A. Dice F.D.

Drew Schellhaas F.D.

*"Bakerstown—Richland Twp."*

Schellhaas Funeral Home & Cremation  
Services Ltd.

5864 Heckert Rd.

Bakerstown PA 15007

724-443-1505 / fax 724-443-3437

C. Matthew Schellhaas, Supervisor

*"Franklin Park"*

Schellhaas & Sons Funeral Home  
& Cremation Services Inc.

1600 Stone Mansion Dr.

Sewickley, PA 15143

C. A. Schellhaas, Supervisor

Ryan D. Schellhaas F.D.

(724) 934-3000



*Di Pietro's*  
*Ristorante*

412 Perry Highway  
West View • (412) 931-9878

**VOTED THE BEST ITALIAN RESTAURANT IN THE NORTH HILLS**

**Proudly Serving West View And the North Hills  
For The Past 41 Years**

*Carni • Vitello • Pollo*  
*Futti Di Mare • Casseruole*  
*Large Selection of Pastas*

Appetizers • Pizza • Hoagies  
Salads • Calzones • Soups

The DiPietro name stands for quality, homemade food in the true Italian tradition. Only the finest ingredients are used in DiPietro's kitchen and everything is prepared daily.

Good Wine Selection • Domestic & Imported Beers  
Cappuccino • Espresso

*Buon Appetito*

## 2020 STREET SWEEPING SCHEDULE

We hope you enjoyed the break, but from April 22 through November 15, you'll once again need to pay attention to those street sweeping signs if you park your car on the streets of West View. The times and days of the week for street sweeping is posted on each street in the borough. Vehicles are to be moved during those times, even if the street sweeper has passed through.

Fines for street sweeping are \$10.00 and if not paid, a state citation will be issued.

We want to thank you in advance for keeping the lanes clear so the street sweeper can clean the streets. Your cooperation is what makes the program successful. Street sweeping schedules are available in our lobby at 441 Perry Highway and on our website at [www.wvboro.com](http://www.wvboro.com).

### PLEASE CHECK YOUR STREET SIGNS FOR THE CORRECT DAY & TIME

---

#### THE SECOND AND THE FOURTH TUESDAY OF EACH MONTH

2020 DATES - 4/28, 5/12, 5/26, 6/9, 6/23, 7/14, 7/28, 8/11, 8/25, 9/8, 9/22, 10/13, 10/27, 11/10

##### 7:00 AM UNTIL 11:00 AM

ADRIAN AVE. - From Columbia to Dead End Ross Twp. Line\*\*  
CARLISLE AVE. - From Princeton to Harvard\*\*  
CENTER AVE. - From Perry to Williams (Even # Side)  
COLUMBIA AVE. - From Center to Dead End\*\*  
COLUMBIA AVE. - From Dead End to Ross Twp. Line\*\*  
CORNELL AVE. - From Center to Ross Twp. Line\*\*  
HARVARD AVE. - From Center to Carlisle  
HOMEKORT AVE. - Entire Length\*\*  
LAKEWOOD AVE. - From Chalfonte to Waverly (Odd # Side)  
OBERLIN AVE. - Entire Length\*\*  
PRINCETON AVE. - From Center to Bronx\*\*  
YALE AVE. - From Center to Columbia\*\*  
YALE AVE. - From Carlisle to Dead End\*\*

##### 11:00 AM UNTIL 3:00 PM

AMHERST AVE. - From Cornell to Ross Twp. Line\*\*  
ANN ARBOR AVE. - Entire Length\*\*  
COLUMBIA AVE. - From Center to Highland\*\*  
DARTMOUTH AVE. - From Stanford to Lehigh\*\*  
FORDHAM AVE. - Entire Length\*\*  
GEORGETOWN AVE. - From Cornell to Lehigh\*\*  
GEORGETOWN AVE. - From Cornell to Columbia\*\*  
GEORGETOWN AVE. - From Columbia to Dead End  
HARVARD AVE. - From Center to Kenyon\*\*  
LEHIGH AVE. - From Dartmouth to Highland\*\*  
PRINCETON AVE. - From Center to Ross Twp. Line\*\*  
STANFORD AVE. - From Amherst to Kenyon\*\*  
VASSAR AVE. - From Stanford to Kenyon  
YALE AVE. - From Stanford to Dead End\*\*

---

#### THE SECOND AND FOURTH WEDNESDAY OF EACH MONTH

2020 DATES - 4/22, 5/13, 5/27, 6/10, 6/24, 7/8, 7/22, 8/12, 8/26, 9/9, 9/23, 10/14, 10/28, 11/11

##### 7:00 AM UNTIL 11:00 AM

BRONX AVE. - Entire Length\*\*  
CENTER AVE. - From Perry to Williams (Odd # Side)  
CHALFONTE AVE. - From Center to Perry\*\*  
HEMPSTEAD AVE. - Entire Length\*\*\*\*  
JAMAICA AVE. - From Hempstead to Highland\*\*  
LAKEWOOD AVE. - From Chalfonte to Dead End (Even # Side)  
LAKEWOOD AVE. - From Chalfonte to Highland\*\*  
MINEOLA AVE. - Entire Length\*\*  
MONTCLAIR AVE. - From Lakewood to Highland\*\*  
WAVERLY AVE. - Entire Length

##### 11:00 AM UNTIL 3:00 PM

ASHFORD (Left Side/Odd # Side only)  
CHALFONTE AVE. - From Bellevue to Ashford (Odd # Side)  
CROSS CREEK CT. - Entire Length  
HIDDEN VALLEY DR. - Entire Length  
JAMAICA AVE. - From Highland to Wellington  
MARQUETTE RD. - Entire Length  
MONTCLAIR AVE. - From Highland to Dead End  
SOUTH FORK DR. - Entire Length  
WELLINGTON DR. - Entire Length  
WENTWORTH AVE. - Entire Length (Odd # Side)

---



---

---

## THE SECOND AND FOURTH THURSDAY OF EACH MONTH

2020 DATES - 4/23, 5/14, 5/28, 6/11, 6/25, 7/9, 7/23, 8/13, 8/27, 9/10, 9/24, 10/8, 10/22, 11/12

### 7:00 AM UNTIL 11:00 AM

ASHFORD AVE. - (Right Side/Even # Side only)\*\*  
BELLEVUE AVE. - Entire Length\*\*  
CENTER AVE. - From Perry to Twp. Rd.  
CHALFONTE AVE. - From Perry to Bellevue  
CHALFONTE AVE. - From Bellevue to Ashford (Even # Side)  
CRESSON AVE. - Entire Length  
GLENMORE AVE. - Entire Length  
HIGHLAND AVE. - From Perry to Ashford\*\*  
SCHWITTER AVE. - Entire Length  
TOWNSHIP RD. - Entire Length  
WENTWORTH AVE. - Entire Length (Even # Side)  
WESTFIELD AVE. - Entire Length\*\*

### 11:00 AM UNTIL 3:00 PM

BRIGHTWOOD AVE. - Entire Length\*\*  
CENTER AVE. - From Twp. Rd. to Brightwood  
CLAIRMONT AVE. - Entire Length\*\*  
CURTIS WAY - Entire Length  
FRANKFORT AVE. - From Center to Richland (Even # Side)  
HAWTHORNE AVE. - From State to Dead End\*\*  
HAWTHORNE AVE. - From Center to State  
LANSING AVE. - Entire Length  
MT. VERNON AVE. - From Norwich to Bell Dr \*\* (Even # Side)  
NORWICH AVE. - From Center to Clairmont\*\*  
PARK AVE. - From Center to Frankfort (Even # Side)  
PARK AVE. - From Perry to Center\*\* (Odd # Side)  
RIDGEWOOD AVE. - From Perry to Dead End (Even # Side)  
STATE WAY - Entire Length

---

---

## THE SECOND AND FOURTH FRIDAY OF EACH MONTH

2020 DATES - 4/24, 5/8, 5/22, 6/12, 6/26, 7/10, 7/24, 8/14, 8/28, 9/11, 9/25, 10/9, 10/23, 11/13

### 7:00 AM UNTIL 11:00 AM

BELL DRIVE - Entire Length \*\*  
CENTER AVE. - From Brightwood to Old Perrysville Rd.  
FAIRVIEW AVE. - Entire Length\*\*  
MAGNOLIA AVE. - Entire Length\*\*  
MARTSOLF AVE. - From Ridgewood to Bridge\*\*  
NORTH PARK RD. (LINWOOD) - Entire Length\*\*  
ORLANDO AVE. - Entire Length\*\*  
OAKWOOD AVE. - From Bell to Dead End (Steps)\*\*  
OAKWOOD AVE. - From Center to Dead End (Steps)\*\*  
PARK AVE. - From Perry to Center\*\* (Even # Side)  
PERRYSVILLE RD. (Old) - From Center to Perry (Boro Side Only)  
RICHLAND AVE. - Entire Length\*\*  
RIDGEWOOD AVE. - From Perry to Dead End (Odd # Side)

### 11:00 AM UNTIL 3:00 PM

BEECHMONT AVE. - Entire Length\*\*  
FENTON WAY - Entire Length  
FRANKFORT AVE. - From Center to Richland (Odd # Side)  
FRANKFORT AVE. - From Center to Park\*\*  
LIPP AVE. - Entire Length  
MARTSOLF AVE. - From Bridge to Park\*\*  
MT. VERNON AVE. - From Ridgewood to Bell Dr (Odd Side)\*\*  
OAKLEY AVE. - Entire Length\*\*  
OAKWOOD AVE. - From Center to Fenton\*\*  
PARK AVE. - From Center to Frankfort (Odd # Side)  
TOMOKA AVE. - Entire Length\*\*

---

---

**\*\* DENOTES - OPPOSITE SIDE STREET PARKING PERMITTED DURING STREET CLEANING HOURS\*\***

**\*\*\*\* DENOTES - OPPOSITE SIDE STREET PARKING PERMITTED - HOWEVER DIAGONAL PARKING IS NOT PERMITTED\*\*\*\***

**Please note: VEHICLES MUST BE MOVED DURING THE DESIGNATED TIMES REGARDLESS IF THE STREET SWEEPER HAS PASSED THROUGH, MAKING SURE EMERGENCY VEHICLES HAVE ACCESS.**

---

---

## WASTE MANAGEMENT



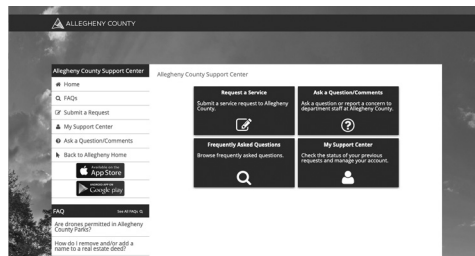
Waste Management's At Your Door Special Collection service can safely collect many types of unwanted potentially hazardous and hard-to-recycle items from your home.

In 2013, Pennsylvania passed the Covered Device Recycling Act that prohibits the collection of electronic devices such as televisions, computers, laptops, monitors and tablets with regular garbage service. The intent was to keep this e-waste from ending up in landfills.

Please visit [www.wmatyourdoor.com](http://www.wmatyourdoor.com) or call 1-800-449-7587 for more information on how the program works or to schedule a pickup.

## ALLEGHENY COUNTY

Allegheny County residents and visitors can now use a single phone number 412-350-INFO (4636) to request snow and ice removal from county roads and bridges, ask questions related to parks programming and shelter reservations, plus a variety of other topics. Call center staff are available weekdays from 8:30 AM to 6:00 PM. Evening and weekend calls for parks and public works that require immediate attention are directed to on-call staff those departments. Other non-emergency calls will be responded to on the following business day.



Residents can also visit <https://CallCenter.AlleghenyCounty.us> to use the online support center. Users have an option of creating an account to manage their requests but can also submit anonymous service requests. The Allegheny County app is a mobile version of the support center.

## NORTH HILLS SCHOOL DISTRICT - SENIOR CITIZEN DISCOUNTS

A Senior Citizen Athletic Pass that entitles North Hills School District residents over age 60 FREE admission to all North Hills home athletic events is available by visiting the high school athletics and activities office.

North Hills School District also offers free admission for senior citizens to the matinees of the fall play and spring musical.

For more information, visit [www.nhsd.net](http://www.nhsd.net).

## PET SAFETY IN THE HEAT

**Shade and water:** Protect your pets from the sun's rays and keep them hydrated.

**No cars:** Never leave a pet in the car, not even with the window cracked.

**No asphalt:** If it's too hot for bare feet, it's too hot for bare paws.

**Limit exercise:** Don't let playful pets over exert themselves in the heat.

**Heat stroke:** Excessive panting, discolored gums, and mobility problems are signs. Seek veterinary attention immediately.

## Cranberry Hearing & Balance

**Jenna A. Littleton, AuD, CCC-A**  
**Doctor of Audiology**

999 West View Park Drive  
Pittsburgh, PA 15229

Phone: 412.931.9290  
Fax: 724.304.0155

Visit us at:  
[www.cranberryhearing.com](http://www.cranberryhearing.com)



## HONORING OUR MILITARY BANNERS

Would you like to honor a current or deceased resident of West View Borough who served in the military?

Visit [www.wvboro.com](http://www.wvboro.com) and click on "Salute to Our Veterans" for more information and to apply.

## West View Floral Shoppe inc.

452 Perry Highway • West View, PA 15229 • (412) 931-1258  
Beth Schellhaas - Owner

- Weddings
- Funerals
- Antiques
- Plants
- Gifts



[westviewfloral.com](http://westviewfloral.com)  
e-mail: [westview.floral@verizon.net](mailto:westview.floral@verizon.net)

**West View Barber Shop**

440 Perry Highway  
Pittsburgh, PA 15229

412-931-3090 Find us on Facebook!

Shop ★ Hours  
Tuesday-Friday 9-7pm  
Saturday 9-3pm  
Closed Sunday & Monday

## BURNING PERMITS

Burning permits are NOT required in West View Borough. Like most neighboring municipalities, West View Borough follows the Allegheny County Health Department's Air Quality Program, as outlined below.

ANYONE FOUND TO BE IN VIOLATION OF THESE GUIDELINES WILL BE SUBJECT TO FINES AND/OR PENALTIES. ALLEGHENY COUNTY HEALTH DEPARTMENT AIR QUALITY PROGRAM GUIDELINES FOR ISSUANCE OF OPEN BURNING PERMITS AND ENFORCEMENT OF THE OPEN BURNING REGULATION - §2105.50 OF ARTICLE XXI (Revised: January 1, 2015)

1. OPEN BURNING SHALL BE DEEMED TO BE ALLOWED WITHOUT A PERMIT ONLY IF:

a. For recreation, camping, or a cookout: i. Only dry, clean wood products or other clean-burning fuels are burned; ii. Only smokeless fuels, if any, are used to start the fire; iii. The



pile of material being burned is no larger than 3' wide, 3' feet long, and 2' high; iv. The fire is at least 15' from the nearest structure, inhabited area, roadway, property line, or utility; and v. No fires are permitted to be burned on Air Quality Action Days. To determine if a day is under this restriction, please visit the Health Department's website at: [www.achd.net/air](http://www.achd.net/air) or call 412-578-8115. You can also call the helpline at 412-687-2243.

b. For Warmth of work crews: i. The burning is conducted in a noncombustible container no larger than a 55 gallon drum; ii. The material being burned is completely contained by the container; iii. Only one container is used for each work crew; and iv. The outside temperature is less than forty degrees Fahrenheit (40 F).

TO REPORT SOMEONE WHO IS IN VIOLATION OF THE ABOVE RULES, CONTACT THE POLICE DEPARTMENT AT "9-1-1".



## WEST VIEW HUB

The West View Hub remains a resource for the community and people of all ages. Our weekly programs include Homework Help, Yoga, Story Time, and Dungeons and Dragons. Our monthly programs include Computer Classes, Book Club, Knit and Crochet Group, and Girls Who Code. We also offer a Food Pantry to those in need, which is available twice a week on Mondays and Thursdays (4-6 PM).

Coming again this summer, we plan to offer a daily program for children, which will kick off in June. All of our programs and resources, including our library and computers, are free to the public. In light of the COVID-19 virus, our schedule and programs may change temporarily, but we will still do the best we can to serve our community and keep the safety of our community members in mind.

Please check our website ([westviewhub.org](http://westviewhub.org)), our Facebook page, or call (412-301-8381) or email us ([westviewhublibrary@gmail.com](mailto:westviewhublibrary@gmail.com)) to stay updated on the status of the Hub and our programs. We will do our best to respond to your questions, concerns, and needs in a timely manner. We look forward to seeing you soon!

## 2020 CENSUS

Starting in the middle of March, you will receive census information in your mailbox. We encourage everyone to complete their census by mail, phone or online. It is important for everyone to be counted in the 2020 census! An incomplete count in Allegheny County can negatively affect the impact in Pennsylvania.

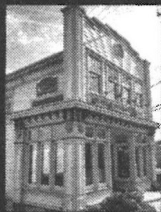
On April 1, 2020 the U.S. Census Bureau will be counting all residents living in the United States. In Pennsylvania, we're committed to working together to make sure all our neighbors are included in the census. We encourage all Pennsylvanians to learn more about the 2020 Census and your role as a resident.

The U.S. Constitution requires a census of all residents in the entire country every 10 years. The census counts every person living in the U.S. once (and only once) in the right place. You are counted based on where you are living on April 1, 2020. Regardless of your living situation, you count as a Pennsylvanian. It also doesn't matter what your citizenship status is, how old you are, or your gender. If you live here, you matter to us and the census. Complete the 2020 census to help our community and define the important issues of the new decade. You can contact the Census Bureau for support at 1-800-923-8282 or [www.2020census.gov](http://www.2020census.gov).

# Where life happens

## West View—It's home.

We're here to protect your corner of the community and everything in it.



**Todd Smith**  
J.S. Smith Insurance Agency, Inc.  
156 Perry Highway  
Pittsburgh, PA 15229  
[www.jssmithinsurance.com](http://www.jssmithinsurance.com)  
412-931-6070

Erie Insurance Exchange, Erie Insurance Co., Erie Insurance Property & Casualty Co., Flagship City Insurance Co. and Erie Family Life Insurance Co. (Erie, PA) or Erie Insurance Co. of New York (Rochester, NY). Go to [erieinsurance.com](http://erieinsurance.com) for company licensure and product details. CM5149\_comun2 2/18



**Erie Insurance®**



## DEADLINE TO FILE FOR PROPERTY TAX OR RENT REBATE EXTENDED TO DECEMBER 31

AMBRIDGE, March 19 – State Rep. Rob Matzie, D-Beaver/Allegheny, announced today that in response to the COVID-19 outbreak, the state Department of Revenue has extended the deadline to file for a rebate under Pennsylvania's Property Tax/Rent Rebate Program from June 30 until Dec. 31.

"The deadline extension on this popular program is always great news, but this year, it's more important than ever, as seniors and other eligible residents who want help with the application process are being advised to limit public outings, and district offices are temporarily closed to the public because of the COVID-19 epidemic," Matzie said.

"It's good to know that our seniors and other vulnerable residents who want help filing for rebates on their 2019 taxes or rent paid will now have more time to seek that assistance later in the year, when it should be safer to do so."

Matzie added that residents can still request applications online through the Department of Revenue's website. The Property Tax/Rent Rebate Program benefits seniors 65 or older, widows and widowers 50 or older and people with disabilities 18 or older. The income limit is \$35,000 a year for homeowners and \$15,000 for renters, and half of Social Security income is excluded.

Spouses, personal representative and estates may also file claims on behalf of claimants who lived at least one day in 2019 and meet other eligibility guidelines.

The maximum standard rebate is \$650, but supplemental rebates for qualifying homeowners can boost rebates to \$975.

More information on the program is available at the Department of Revenue's webpage, [www.revenue.pa.gov](http://www.revenue.pa.gov).

## PORT AUTHORITY CONNECTCARD

ConnectCard is a reusable plastic smart card that makes paying your fares faster, easier and more secure than paying with cash.



Using a ConnectCard instead of cash saves 25 cents on every ride and more if you transfer.

You can purchase and reload ConnectCards online, at select Port Authority light rail and busway stations, Port Authority's Downtown Service Center and at participating retail outlets, including most Giant Eagle and Goodwill locations throughout the region.

Balance Protection is available in case your card is ever lost or stolen.

Port Authority Contact Information  
Customer Service: 412-442-2000  
Weekdays 6AM – 7PM  
Weekends and Holidays 8AM – 4:30PM

You may also contact State Representative Adam Ravenstahl's office at 412-321-5523 or State Senator Lindsey Williams' office at 412-364-0469.

## LINDSEY WILLIAMS

District Office  
5000 McKnight Road  
Suite 405  
Pittsburgh, PA 15237  
Phone: 412-364-0469

Harrisburg Office  
366 Capitol Building  
Senate Box 203038  
Harrisburg, PA 17120-3038  
Phone: 717-787-6538

State Senator  
**LINDSEY M.  
WILLIAMS**  
38th Senatorial District

## ADAM RAVENSTAHL

State Representative  
20th Legislative District

Capitol Office:  
321 Irvis Office Building  
P.O. Box 202020  
Harrisburg, PA 17120-2020  
(717) 787-5470

District Office:  
3689 California Avenue  
Pittsburgh, PA 15212  
(412) 321-5523

Satellite Offices:  
Avalon Borough Building  
640 California Avenue  
Avalon, PA 15202  
Open 8:30 a.m. to noon  
Thursdays

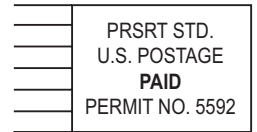
Polish Hill Civic Association  
3060 Brereton Street  
Pittsburgh, PA 15219  
Open 12:30 p.m. to 4:30  
p.m. Fridays

[www.pahouse.com/Ravenstahl](http://www.pahouse.com/Ravenstahl)  
[RepRavenstahl@pahouse.net](mailto:RepRavenstahl@pahouse.net)



## WEST VIEW BOROUGH

441 Perry Highway  
Pittsburgh, PA 15229



# Spring/Summer 2020 Newsletter