

## Fast facts

### West View

- **FOUNDED:** 1905.
- **ORIGIN OF NAME:** Named after the West View Inn, a hotel.
- **POPULATION:** 7,762.
- **AREA:** 1.1 square miles.
- **BOUNDARIES:** Surrounded by Ross Township.
- **POSTAL-ZIP:** West View, 15229.
- **POLICE:** Nine officers. Chief Laird Kircher. 931-2800.
- **FIRE:** 931-2800.
- **EMERGENCY NUMBER:** 931-2800.
- **TRASH COLLECTION:** Waste Management, 2197 Duss Ave., Ambridge, PA 15003; 266-8880.
- **RECYCLING:** Materials include plastic, bi-metal cans, aluminum and clear, brown and green glass. Curbside every other week.
- **BOROUGH OFFICE:** 441 Perry Highway. Hours: 8 a.m. to 4 p.m., Monday through Friday.
- **NUMBER OF EMPLOYEES:** 21 full-time, 13 part-time.
- **BOROUGH MANAGER:** Ken Wolf, 931-2800.
- **MAYOR:** Richard Powell, 931-2800.
- **BOROUGH COUNCIL:** All, 931-2800. President Daniel Dougherty; Vice President Mary Kay Bernhard; Joseph Nowark; John Gorman; David Glavin; John Henry; Bernard Smith.
- **MEETINGS:** Council meets on the second Wednesday of each month at 8 p.m. in the borough building on Perry Highway. Planning Commission meets the third Monday of each month at 8 p.m.
- **TREASURER:** Ken Wolf, 931-2800.
- **TAX COLLECTOR:** William Wounderly, 931-9449.
- **1992 BUDGET:** \$2.2 million.
- **TAXES:** Municipal property tax, 22 mills; school tax, 83.25 mills; Allegheny County, 36.5 mills; earned income tax of 1 percent, shared with the school district; occupational privilege tax \$10 per year, shared with the school district.
- **SCHOOL DISTRICT:** North Hills, 135 Sixth Ave., Ross, 367-6000; James C. Higgins, superintendent. North Hills High School, 53 Rochester Road, 367-6061.
- **SCHOOL BOARD:** President Dennis Watson, 931-1436; Vice President Thomas Milarski, 367-9045; Arlene Bender, 366-0354; John Bernauer, 367-0196; Alice Harvey, 364-4881; Charlotte Kowalski, 364-2986; Cheri Neely, 486-7446; Joan O'Brien, 367-0774; Mark Scott, 367-0476.
- **UTILITIES, Water:** West View Water Authority, 931-3292. **Sewage:** ALCOSAN, 766-6696. **Cable,** TCI, 741-1840. **Electric,** Duquesne Light Co., 393-7100.
- **U.S. SENATORS:** Harris Wofford (D), Senate Russel Bldg., Room 277, Washington, D.C. 20510, (202) 224-6324. Arlen Specter (R), 3417 Warden Drive, Philadelphia, 19104, 215-597-7200.
- **U.S. REPRESENTATIVE:** Rick Santorum (R), 200 Fleet St., Room 4000, Pitt, PA 15220, 928-0725.
- **STATE SENATOR:** Melissa Hart (R), 40th District; 3880 Babcock Blvd.; Pittsburgh, PA 15237, 369-0525.
- **STATE REPRESENTATIVE:** David Mayernik (D), 29th District; 440 Perry Highway; Pittsburgh, PA 15229; 931-2295.
- **COMMUNITY GROUPS:** West View Kiwanis.
- **BUSINESS GROUPS:** West View Chamber of Commerce, 931-1258.
- **LIBRARY:** Northland Public Library, 366-1800.
- **CHURCHES:** St. Aphanasius Catholic, 931-4624; Mt. Calvary Evangelical Lutheran, 931-4500; St. Paul's Evangelical Lutheran, 931-3886; North Hills United Presbyterian, 931-2788; St. Luke Lutheran, 931-1674; West View United Methodist, 766-2223.

## West View



SAED HINDASH, Contributing photographer

Waiting for customers at their doorstep iced tea stand are, from left, Kathy Rice, 11, Chris Husak, 5, and Zack Husak, 8.

## Police curb crime through improved communications

By David Donald

Staff writer

In many ways, West View has changed little through the time Richard Powell has been mayor.

After 23 years in office, Powell describes the small 1.1-acre borough as a bedroom community, a nice residential area with stable neighborhoods. Most contain single-family dwellings.

"A lot of people have been here 50 years or more," he says. "They are a friendly bunch of people."

The borough takes pride in its services. "No matter where you go, you hear about our road crew, even in the winter," Powell says.

But in other ways, time has brought West View a few challenges. Since Interstate 279 opened, Powell not only has seen an influx of traffic and congestion but also a small increase in crime.

With I-279 access, West View is an easy target. "They can pull a job and be up in the hills in seven-and-a-half

minutes," Powell says.

The West View police have improved communications with their Ross counterparts in an attempt to curb the rise, Powell says. That's particularly important to the borough because it's surrounded by the much larger township.

Even the congestion is changing. Powell has noticed more motorists back on Perry Highway that runs through the heart of West View.

Another change is occurring slowly, Powell says, but is having a lasting effect. More and more of the long-time residents are selling their homes and moving to places with cheaper rent outside the borough, he says. The new buyers are often younger families with children.

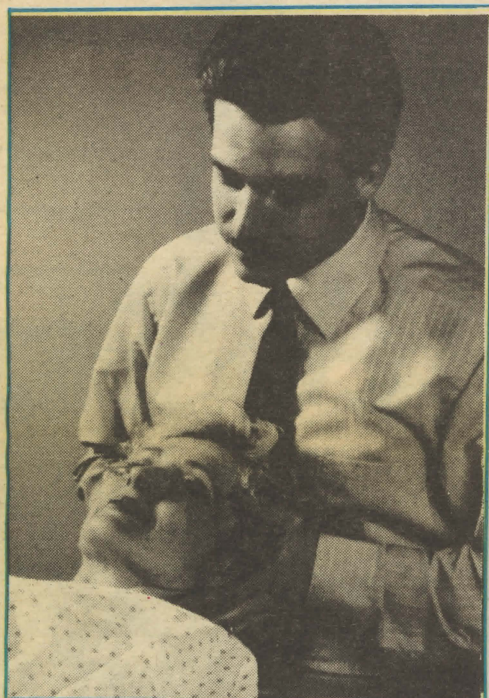
The community offers affordable housing that makes West View attractive to first-time buyers, says Ken Wolf, borough manager.

The new people are friendly, too, Powell says. "They are neighborly."



# CHOOSE EAGLE AND SOAR THROUGH YOUR RECOVERY

EAGLE Physical Therapy has helped hundreds of patients feel stronger and more flexible after an illness, surgery or serious injury

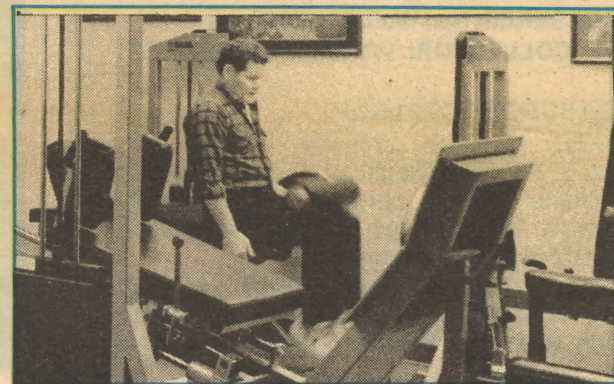


*Physical therapy plays a more vital role than ever in medical care today.*

EAGLE P.T. uses the latest proven techniques and equipment. Each therapist is dedicated to an individual, one-on-one approach to patient care; our philosophy is to treat patients "with our hearts and our hands".

Eagle Physical Therapy provides the latest treatments for...

- Spinal injuries including those sustained in motor vehicle accidents
- Athletic injuries
- Nerve impingement
- Foot and ankle problems such as heel spurs and sprains
- Osteoporosis
- Arthritis
- Work-related injuries
- Postural dysfunction
- TMJ
- Headaches
- Neurological disorders such as strokes and multiple sclerosis



*We treat patients at our offices, in their homes, and in nursing and rehabilitation facilities.*

Our therapists are fully licensed and regularly update their skills through continuing education courses.

*While Pennsylvania law requires a doctor's prescription before treatment begins, physical therapists can evaluate an injury and refer patients to the appropriate physician.*

Call today for an appointment. Because when it's *your* choice, you're right to choose EAGLE.

# EAGLE

## PHYSICAL THERAPY

When You Choose, You're Right To Choose EAGLE.

• EAGLE PROFESSIONAL BUILDING  
ZELIENOPLE, PA 16063  
412-452-8360

• MARS PROFESSIONAL BUILDING  
MARS, PA 16046  
412-625-1020

• LANDMARK CENTER  
ALLISON PARK, PA 15101  
412-444-4525

• CHIODO'S PLAZA  
ROBINSON TOWNSHIP, PA 15136  
412-788-6630



**QUAD L  
RANCH & MERCANTILE**

*A Country Store Pursuing the Difference*

Collectors....See our selection of

- ATTIC BABIES
- LIZZIE HIGH DOLLS®
- SARAH'S ATTIC
- MUFFY VANDERBEARS®
- HANDCRAFTS
- COLLECTIBLES
- BRIDAL REGISTRY
- SELECTED ANTIQUES

ALL MAJOR CREDIT CARDS ACCEPTED

Rt. 288  
(Ellwood-Zelienople Rd.)  
Ellwood City

TUES.-SAT. 10-6  
758-2292

**Hair Makes The Man and We Make The Hair.**




BEFORE AFTER

Call or send for your Free Information Package

**Hair Systems...  
unlimited**

330 Adams St., Rochester, PA 15074

776-7671  
or  
800-222-5887

**Jamar Executive Services** 

**Word Processing / Secretarial Center**

- Resumes
- Mail Merge
- List Processing
- Mailing Labels
- Proposals
- Term Papers
- Laser Printing
- Word Processing
- Fax Transmit / Receive
- Notary Public
- General Typing
- Tape Transcription

**Prompt ... Accurate ... Affordable**

THE NATIONAL ASSOCIATION OF SECRETARIAL SERVICES **NASS**

Cranberry Medical Arts Building 1  
20820 Rt. 19 ( 1/2 mi. n. of Viola's )  
412-772-3840 • 412-772-0130 FAX

**MAIL**

**STOP!**

**Servicing You is What We Do!**

SHIPPING

- UPS • AIRBORNE EXPRESS
- U.S. MAIL • OVERNIGHT SERVICE • COPIES • FAX
- PRIVATE POSTAL BOXES
- LAMINATING • NOTARY
- WORD PROCESSING

**MAIL STOP!**

20300 Rt. 19, Ogle Station  
Cranberry (Next to "TCBY")  
772-0977

**WE COVERED A LOT OF GROUND...**

**Sandin-Thomas Development**

**#1 REALTOR/DEVELOPER IN THE NORTH HILLS**



John Sandin- Broker  
Richard Thomas- Broker

**SPECIALIZING IN NEW CONSTRUCTION**  
Creating II New Neighborhoods in the North Hills.

**SEE OUR NEWEST NEIGHBORHOODS**

**WOODLAND FARMS**  
Pine Township

**FAIRBOROUGH**  
Robinson Township

**Put Our Winning Team To Work For You!**  
48 Agents to assist you in your REAL ESTATE NEEDS

**METRO**  
Real Estate Services

**SANDIN—THOMAS**

The Sign Of The 90's

785 Wexford Bayne Road  
Wexford, PA 935-1616

3439 Babcock Boulevard  
Pittsburgh, PA 15237  
367-1110

**TOLL FREE 1-800-331-7157**

**MT. TROY VOLUNTEER FIRE CO.  
BALLROOM**

*capacity up to 450*

**PACKAGE INCLUDES:**

- Catering • China • Silverware • Cake
- Set-ups and Mixes at the bar

Large parking area  
Comfort conditions year round  
1992 dates still available  
Discounts Friday Nights

**321-6969** 33 Lonsdale St., Mt. Troy





**By Janice  
Flower Shoppe**  
*Personalized, Elegant, Something Special*

Flowers for all occasions

- Weddings
- Sympathy
- Anniversary
- Birthday
- Congratulations
- "Just because"

Custom Silk Arrangements  
Fruit and Gift Baskets

20327 Perry Highway  
Cranberry Garden Plaza  
Cranberry Township  
Evans City, PA 16033

Please call for an appointment  
776-5170

Peter Paracca & Sons

## KITCHEN INNOVATIONS . . .



North Hills Leader In  
Innovative Kitchen Designs

Rt. 19 Across from Walmart

935-1130  
931-2828

## Cranberry's most inviting natural resource.



Delicious food and good friends make  
Domenico's one of Cranberry's tastiest new  
recreational activities:

- Open, airy restaurant and bar;
- Lush indoor gardens and live, full-size trees throughout;

- Wide selection of authentic Italian favorites for lunch and dinner;
- Live entertainment Wednesday and Saturday evenings;
- Patio and outdoor dining area open, weather permitting;
- Happy Hour Mon.-Fri. 4 pm-6 pm;
- Daily hors d'oeuvres selections.



Reservations invited... but you're welcome anytime!

Open Monday thru Thursday 11 am -11 pm, Friday 11 am-1 am, Saturday 4 pm-1 am,  
Sunday 4 pm-10 pm.

20550 Rt. 19, Cranberry.

**Domenico's**  
RISTORANTE  
and Pizzeria

... in the Piazza Plaza • 776-6455